



DAILY SUMMARY

Sequence: **No.1**
 Production: **FLEXBOX 3270TEU (2550units) Production**
 Date: **2024/9/9**

To: FLEX-BOX

From: Surveyor Duty

Fred LYU Overall supervision
 Robert HU Surveyor in charge
 Shine YE Surveyor

Cc: Factory QC

1. General Information

P.O. No.:	N/A	Manufacturer:	FLEXBOX
Type & Quantity:	SEE DETAIL LIST	Serial No.:	SEE DETAIL LIST
Spec. No.:	SEE DETAIL LIST	Model No.:	SEE DETAIL LIST
Steel:	SPA-H	Classification:	LR
Paint:	KCC	Floor:	BAMBOO & PLYWOOD + PSF

2. Production Status

Production Status	Comments	Today	Accumulative
Main Assembly:	Ongoing	142	142
Units Off-Lined:	Ongoing	118	118

3. Inspection Status

Inspection Status	Today	Accumulative
Units Inspected:	88	88
Units Accepted:	88	88
Units Permanently Rejected:	NIL	NIL
The Last Unit Would be Off-Lined on:	2024/9/6	
The Final Inspection Would be Completed on:	2024/9/19	

4. Delivery Status

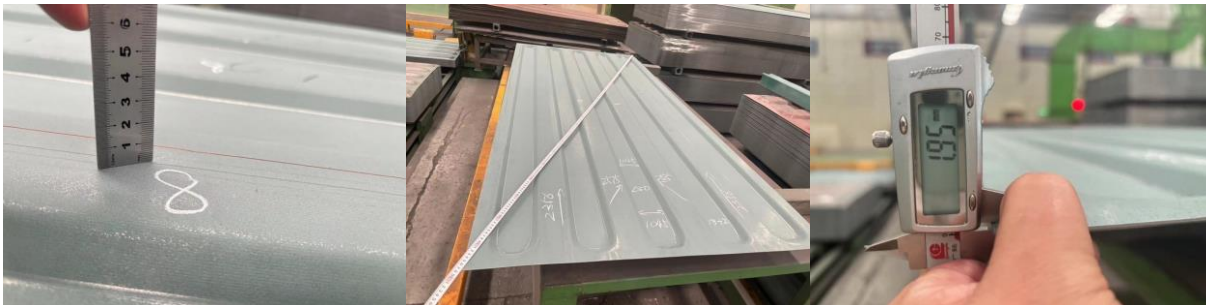
Delivery Status	Today	Accumulative
Total Qty Accepted:	88	88
Total Qty Delivered:	NIL	NIL
Total Qty Ready for Delivery = (Accepted Qty - Delivered Qty)	NIL	NIL
Total Qty Remain in Factory = (Total Batch Qty - Delivered Qty)	NIL	NIL

5. Detail List

Order	TYPE	Qty	TEU	PREFIX	Start No	End No	On-line	Off lined	Inspected	Accepted
1	20EOD	40	40	UHLU	310010	310049	40	40	40	40
2	20EOD	100	100	ABCU	670406	670505	100	78	48	48
3	20EOD	160	160	UHLU	320141	320300	2			
4	20EOD	50	50	ABCU	670306	670355				
5	20EOD	40	40	JSCU	190951	190990				
6	20EOD	50	50	RBRU	270201	270250				
7	20EOD	50	50	RBRU	370201	370250				
8	20EOD	25	25	LVNU	186611	186635				
9	20EOD	300	300	FXLU	216507	216806				
	TOTAL	815	815				142	118	88	88

6. Inspection Comments

1. The forming process for 20EOD continued and finished today, checked the formed component dimension and thickness complied with drawing and specification.



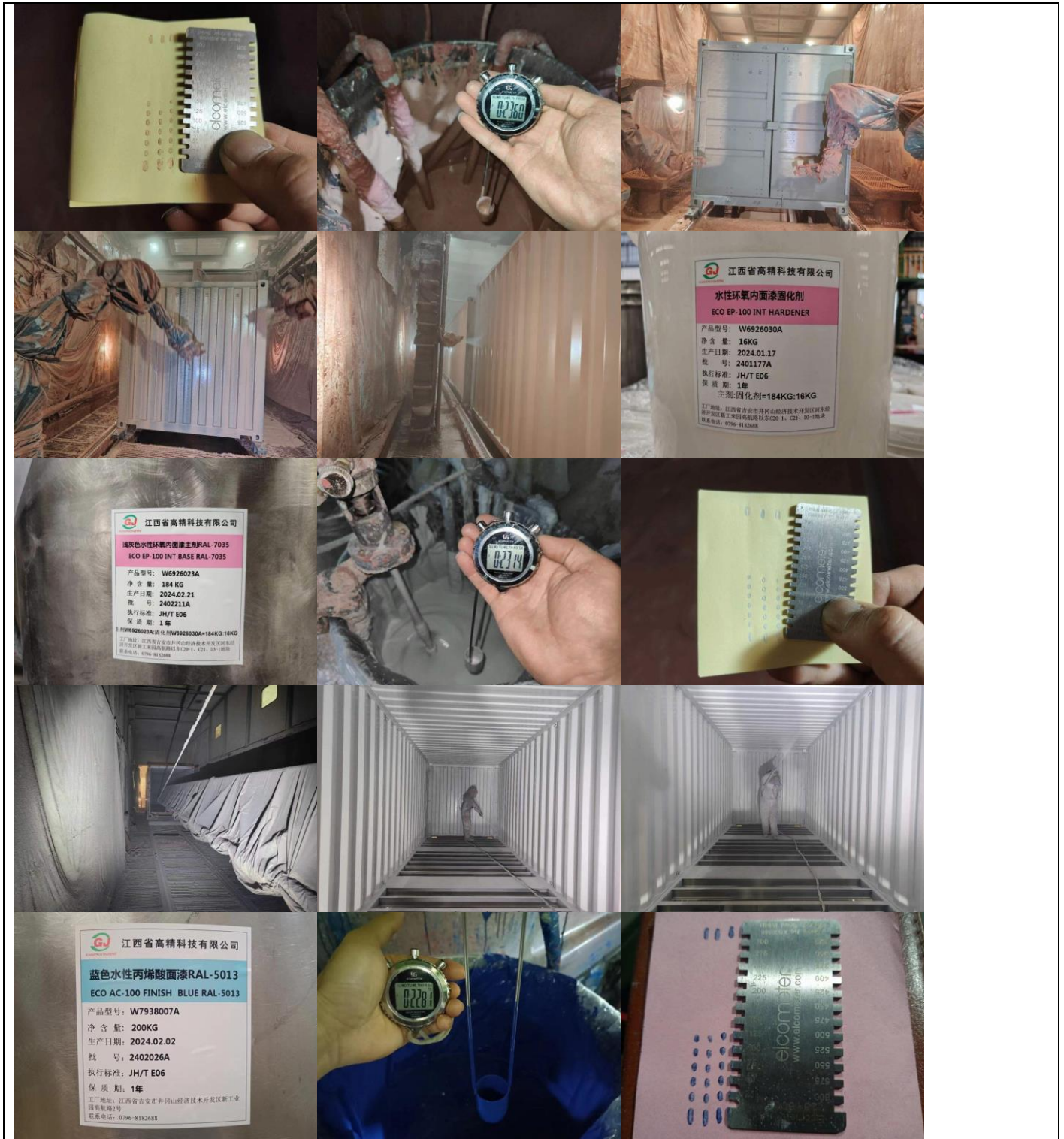
2. The sub assembly and main assembly continued today, checked the dimension complied with drawing, the diagonals were within 4mm.

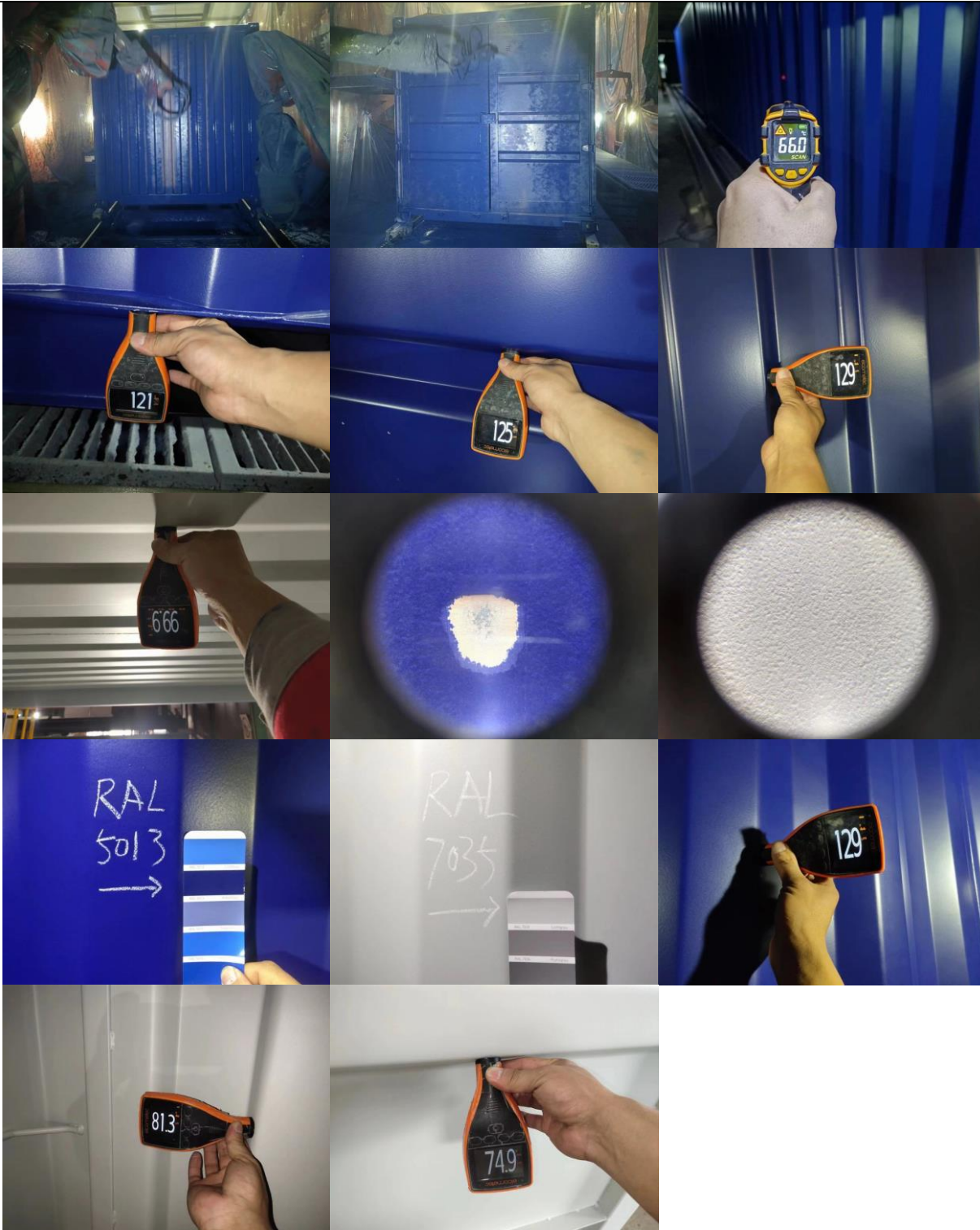




3. The 2nd shot blasting and paint application process commenced this afternoon, checked the condition on site, found the poor 2nd shot blasting on the interior corner post hidden area, rectified on site, condition improved later. Detail as below:







4. The final application commenced late this afternoon, checked the final application condition on site, details as below:



Duty Surveyor:	Fred LYU, Robert HU, Shine YE	Factory QC:	Roy DENG
-----------------------	--------------------------------------	--------------------	-----------------

- End of Report -