

Container-Quick-Tie®

Standard Upper/Lower Type

The rigid and force-locking container device

This is a coupling device for a rigid and force-locking connection of two 20 ft ISO containers of identical overall height in longitudinal direction, such as to form one 40 ft container unit. The coupling device is not an integral part of the container but may be carried in a storage compartment in the bottom of the container.

Little investment results in great benefit

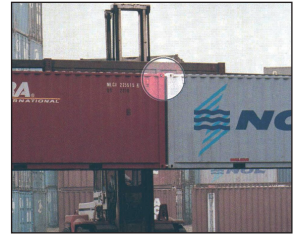
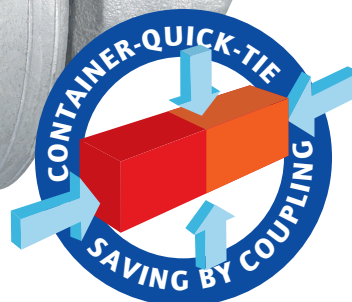
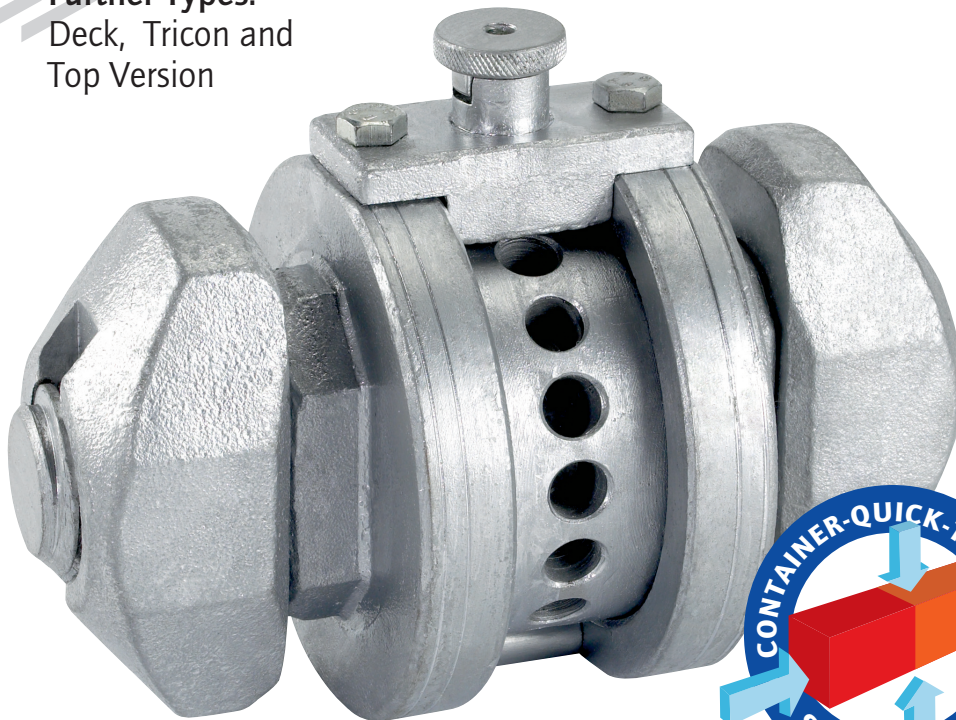
For each 20 ft container, only two coupling devices are required to establish a rigid and force-locking connection. Due to the different ISO openings of the Corner Castings on the front side of each container, the couplings are classified as one upper and one lower coupling.

Features:

No structural modification required of any existing containers, handling systems of means of transportation.

- harmonization of the variety of container types
- optimized utilization of the 20 ft containers
- full exploitation of the invested capital
- with the aid of the coupling device, it is possible to carry two 20 ft containers as one 40 ft stowage spaces
- minimization of empty container transport
- the coupling device may be used for both empty and loaded containers (up to 20.000 kg)
- quick container loading und unloading while connected, since accessible from two sides

Further Types:
Deck, Tricon and
Top Version



Tested and certified by Germanischer Lloyd

Original is best

Container-Quick-Tie® Standard Upper/Lower Type

Part List and Fitting Instructions

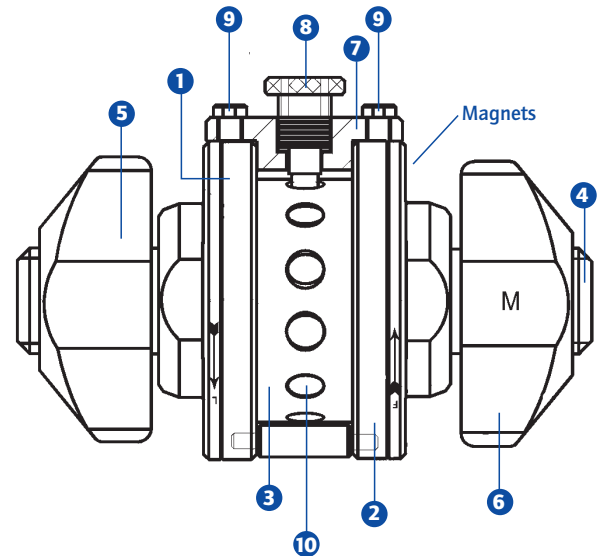
Part List

For a complete coupling 2 top and 2 bottom coupling devices are needed

(1 top and 1 bottom for each 20' Container)

Description of the device

- | | |
|-----------------------------|-----------------------------|
| ❶ Distance piece left | ❷ Distance piece right |
| ❸ Quick action piece | ❹ Threaded bar |
| ❺ Stretching hammer left | ❻ Stretching hammer right |
| ❼ Bridge | ❽ Security bolt |
| ❾ Fitting screws for bridge | ❿ Opening for Security bolt |

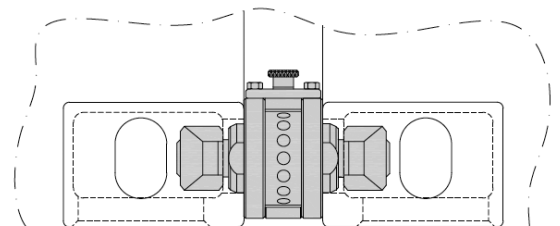


Preparation and Fitting instructions

- Containers to be coupled are to be dropped on the coupling platform or on a flat surface (front end to front end)
- Prior to fitting remove both stretching hammers (5+6) from the threaded bar (4)
- Affix Quick-Tie without stretching hammers with the magnets to the frontside of the respective corner casting.

IMPORTANT: Secure the top version by turning the stretching hammer with at least three turns to the threaded bar.

- Move containers together and insert the stretching hammers (5+6) through the side aperture of the corner castings by using the fitting tool. (prior to that remove the stretching hammer out of the top version)
- Turn the quick action piece (3) until both stretching hammers (5+6) are in a horizontal position and smooth affixed at the insides of the front corner castings.



Put in the safety bolt (8) in one of the openings (10) of the quick action piece (rigid connection)

Upon correct completion of the coupling process the safety bolt (8) of the top devices shows to the bottom - and the safety bolt of the bottom devices shows to the top.

Threads and bearings have to be greased carefully!